



DIESEL ENGINE-DRIVEN DC WELDER/AC GENERATOR

DCW-480ESW CC/CV

*One Unit for
All Your Welding Needs!*

All-in-one

450A DC Arc Welding Power Source

DCW-480ESW can perform high-quality welding on pipelines and other welding methods. (Types of welding: Stick, Tig, Mig, Flux-cored, Gouging, etc.)

High-Capacity High-Performance Generator

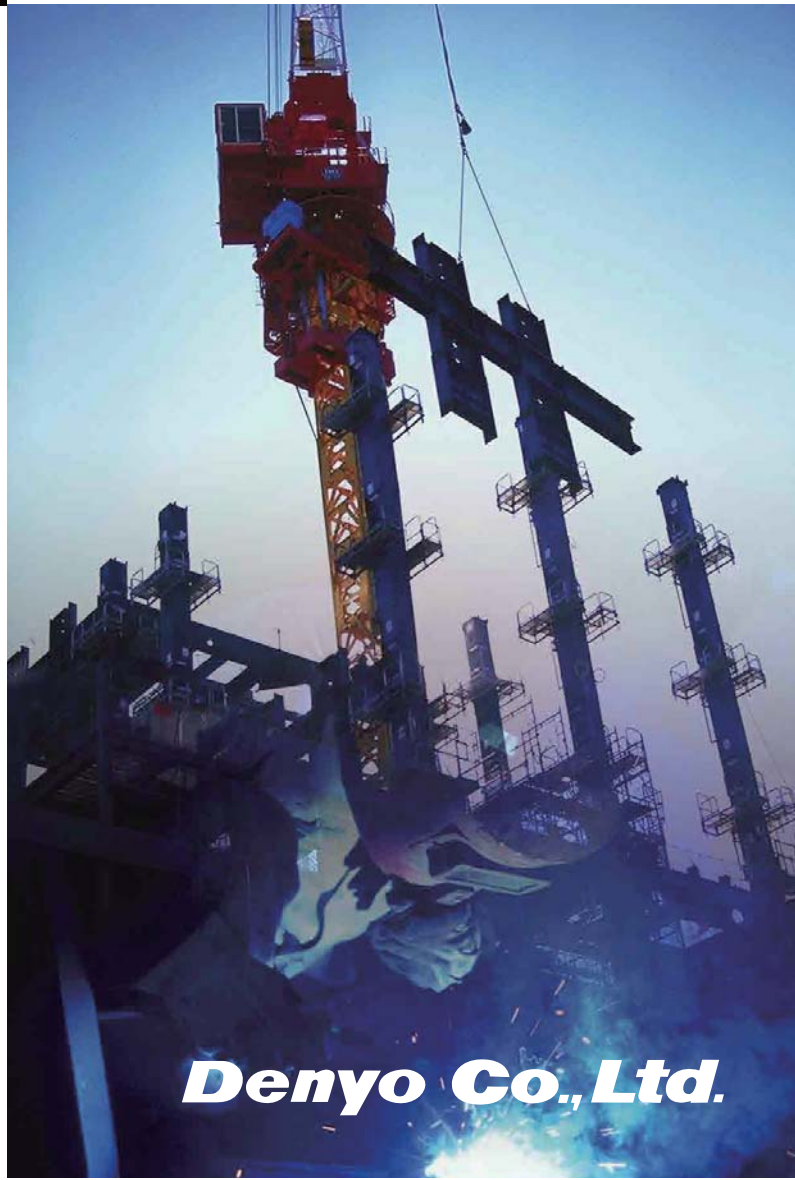
The unit can also be used as a 15kVA/50Hz high-capacity generator. With a voltage regulation of within $\pm 1.5\%$. High-quality AC power can be used while welding is being performed.

Low Fuel Consumption and Long Life

The unit incorporate high-output diesel engine featuring low fuel consumption. Operation at low speed is easy on the engine, facilitating especially long life.

Special Design Facilitates Use in Virtually Any Location

The unit has been designed to operate in virtually all locations, from very hot to cold climates. It is ideal for high-quality welding and as a dependable source of power.

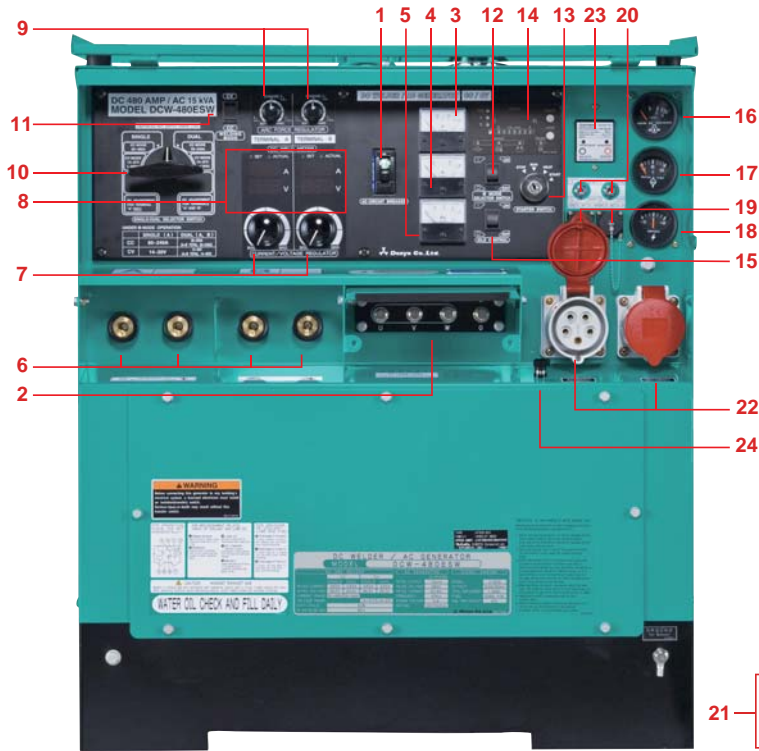


Denyo Co., Ltd.

HIGH PERFORMANCE/Multi-APPLICATION

DCW-480ESW CC/CV DIESEL ENGINE-DRIVEN DC WELDER/AC GENERATOR

Easy-to-use controls and operation integrated in one location.



- OPTION SET1
- 16.Oil Pressure Gauge
- 17.Water Temperature Gauge
- 18.Battery Charging Ammeter
- OPTION SET2
- 19.Remote Control Receptacle
- 20.Remote Control Switch
- 21.Remote Control Box
- OPTION SET3
- 22.3-Phase AC Output Receptacle
- OPTION SET4
- 23.Earth Leakage Relay
- 24.Ground Terminal (for ELR)



- 1.AC Circuit Breaker
- 2.3-Phase output Terminal
- 3.AC Voltmeter
- 4.AC Ammeter
- 5.Frequency Meter
- 6.DC Welding Output Terminal
- 7.Current / Voltage Regulator
- 8.Digital Panel (DC Voltmeter, DC Ammeter)
- 9.Arc Force Regulator
- 10.SINGLE-DUAL Selector Switch
- 11.CC-CV Selector Switch
- 12.e-mode Switch
- 13.Starter Switch
- 14.Engine Monitor Warning Lamp Unit (Oil Press. / Water Temp. / Charging / Preheat Hour Meter • Fuel Meter)
- 15.Idle Control Switch

SPECIFICATION

SPEC./MODEL		DCW-480ESW								
Frequency		Hz	50							
DC WELDING OUTPUT	Rated output	kW	CC:17.1/CV:16.4							
	Rated current	A	450							
	Rated voltage	V	CC:38.0/CV:36.5							
	Single	Current Range	A	CC:60~480						
		Voltage Range	V	CV:14~37						
	Dual	Current Range	A	CC:30~240						
		Voltage Range	V	CV:14~37						
	Rated Speed	min ⁻¹	3000							
	Duty Cycle	%	60							
	AC POWER OUTPUT	Three Phase	Rated output	kVA	15					
Rated voltage			V	200	220	380	400	415	440	
Rated current			A	43.3	39.4	22.8	21.7	20.9	19.7	
No. of Phase			3-Phase 4wire							
Power Factor			0.8 (Lagging)							
Excitation			Brushless type (with AVR)							
No. of poles			2							
Insulation			Class F							

ENGINE		KUBOTA/V1505	
Type	Water-cooled diesel engine		
Number of cylinders	4		
BorexStroke	mm	78X78.4	
Total displacement	L	1.498	
Rated output	kW/min ⁻¹	25.2/3000	
Battery	80D26R		
Fuel	DIESEL FUEL ASTM NO.2 or eq.		
Fuel tank capacity	L	45	
Lubricating oil capacity	L	6.0 (Oil pan 5.8L+Oil filter 0.2L)	
Cooling water capacity	L	4.85 (Reserve tank included)	
SET	Length	mm	1540
	Width	mm	720
	Height	mm	885
	Dry weight	kg	500
	Total weight	kg	558

Denyo The Denyo trademark is widely recognized as a brand, and is a registered trademark in 90 countries around the world.



ISO 9001:2015
ISO 14001:2015
Certified

The specifications given herein are subject to change without notice.

Denyo Co., Ltd.

Head office: 2-8-5, Nihonbashi-horidomecho, Chuo-ku, Tokyo



103-8566, Japan

Tel: +81-3-6861-0055 Fax: +81-3-6861-1188

www.denyo.co.jp/english/